





138 PARK LANE

In the heart of Mayfair, one of London's most exclusive districts, lies 138 Park Lane – four stunning residential apartments promising new levels of luxury and distinction.

The Georgian architecture and grand façade of Sir Edwin Lutyens stands proud within the Grosvenor Estate amongst the vibrancy of one of the world's top cities.



LOCATION

Perfectly positioned, the Grade II listed building is a stone's throw from Hyde Park and just a short walk to the luxurious designer boutiques of Bond Street, Mount Street and South Molton Street to name but a few.

The largest of the Royal Parks, Hyde Park covers 350 beautiful green acres and is home to the Serpentine Lake and Gallery, Speakers' Corner and the Diana, Princess of Wales Memorial Fountain.

With easy access to London's most famous theatres, galleries, museums and historical sites, your lifestyle at 138 Park Lane will reflect the city's vibrant, cosmopolitan energy.





THE APARTMENTS

The finest materials, planning and design have been thoroughly considered throughout. The interior design is original and unique; each apartment boasting its own identity and character with distinctive materials, bespoke joinery, and colour and lighting schemes.

The impeccable standards are set by the grade four high-security door, striking hallway and impressive stone staircase which greet you as you enter the property from the tranquil Dunraven Street.

All apartments feature an integrated Sonos multi-room audio system in all reception rooms, bedrooms and bathrooms. Bowers & Wilkins bookshelf and in-ceiling speakers, and a high-end Marantz home theatre receiver link to the AV system; configurable via iPhone, iPad or Android devices.

Configurable lighting scenes are created via the Lutron Homeworks QS lighting system which adjusts the ambience to suit the required mood. Also configurable via iPhone, iPad or Android devices.

High performance network and Wi-Fi coverage are available throughout, with a Red Care alarm system providing security for peace of mind.





CRYSTAL SUITE



LIVING AREA

The beautifully high ceilings of the Crystal Suite create an ambassadorial ambiance from the moment you step in. The apartment epitomises gracious and sociable 21st century living, with an abundance of light and space in a traditional setting.

Historically accurate, the original cornices and parquet flooring line the living area creating a striking contrast against a collection of contemporary Italian furnishings by Meridiani.

Light and neutral colours compliment the rich, luxurious materials and copper tones of statement pieces including the original restored mirror, handmade brass pendant light and gun metal and copper coffee table. Two generously sized reception rooms give access to a large outside terrace and sought-after views of Hyde Park and Marble Arch.





KITCHEN

The open plan kitchen-dining area has been designed to not only prepare food, but relax and enjoy time spent with friends and family.

The custom made granite worktop is a work of art and the high quality cabinetry reflects the modern chandeliers that hang grandly above. The Poliform specification throughout sets new standards of luxury including top of the range Miele appliances as well as a Quooker boiling water tap and a two zone wine fridge.





BEDROOMS

138 Park Lane's sleeping spaces incorporate soft lighting, luxurious carpeting and plentiful storage space, all designed to complement the way you want to live.

Opulent comfort and elegance are the hallmarks of these beautiful bedrooms, achieved with muted colours and bespoke inlaid rugs. Statement style is achieved with the oversized Meridiani headboard and dark leather and chrome wardrobes, while LED lighting around the lower level cornice enhances the towering ceilings.



CRYSTAL SUITE



BATHROOMS

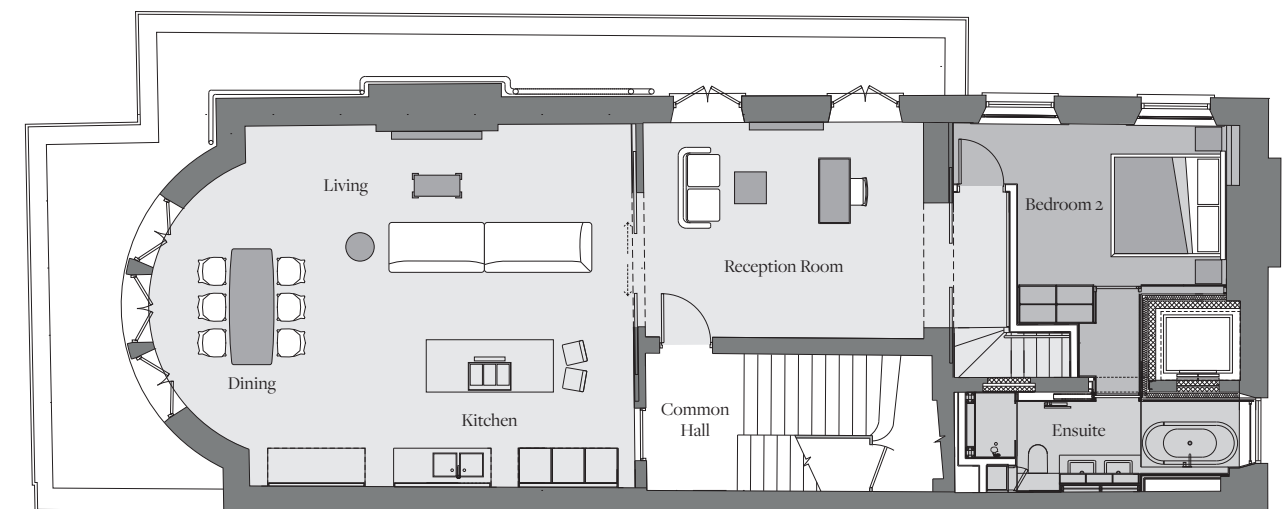
Bathrooms have become sanctuaries away from busy lives; places to relax. The Crystal Suite boasts two generously sized ensembles as well as a separate WC on the lower level.

All bathrooms combine high-specification fixtures with generous space, subdued light and the highest-quality materials such as marble, dark wood effect tiles and elegant stainless steel fixtures to help you unwind in the height of luxury.





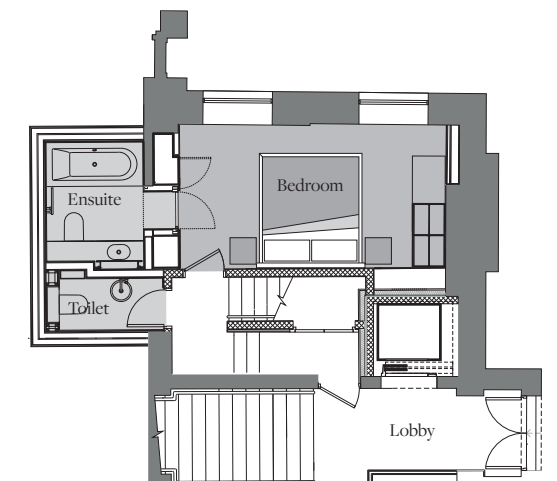
FIRST & GROUND FLOORS



FIRST FLOOR

	square meters	square feet
Kitchen/Living/Dining	57m ²	613ft ²
Reception	21m ²	226ft ²
Bedroom 1	14m ²	150ft ²
Ensuite	4m ²	43ft ²
Toilet	2.5m ²	27ft ²
Bedroom 2	14m ²	150ft ²
Ensuite	8m ²	86ft ²

Net Internal Area	144m ²	1,550ft ²
Balcony	29m ²	312ft ²



GROUND FLOOR

*All floorplans for 138 Park Lane are approximate measurements only. Exact layouts and sizes may vary.



138 PARK LANE

CONTACT

e: contact@138parklane.com
www.138parklane.com

