





138 PARK LANE

In the heart of Mayfair, one of London's most exclusive districts, lies 138 Park Lane – four stunning residential apartments promising new levels of luxury and distinction.

The Georgian architecture and grand façade of Sir Edwin Lutyens stands proud within the Grosvenor Estate amongst the vibrancy of one of the world's top cities.



LOCATION

Perfectly positioned, the Grade II listed building is a stone's throw from Hyde Park and just a short walk to the luxurious designer boutiques of Bond Street, Mount Street and South Molton Street to name but a few.

The largest of the Royal Parks, Hyde Park covers 350 beautiful green acres and is home to the Serpentine Lake and Gallery, Speakers' Corner and the Diana, Princess of Wales Memorial Fountain.

With easy access to London's most famous theatres, galleries, museums and historical sites, your lifestyle at 138 Park Lane will reflect the city's vibrant, cosmopolitan energy.





THE APARTMENTS

The finest materials, planning and design have been thoroughly considered throughout. The interior design is original and unique; each apartment boasting its own identity and character with distinctive materials, bespoke joinery, and colour and lighting schemes.

The impeccable standards are set by the grade four high-security door, striking hallway and impressive stone staircase which greet you as you enter the property from the tranquil Dunraven Street.

All apartments feature an integrated Sonos multi-room audio system in all reception rooms, bedrooms and bathrooms. Bowers & Wilkins bookshelf and in-ceiling speakers, and a high-end Marantz home theatre receiver link to the AV system; configurable via iPhone, iPad or Android devices.

Configurable lighting scenes are created via the Lutron Homeworks QS lighting system which adjusts the ambience to suit the required mood. Also configurable via iPhone, iPad or Android devices.

High performance network and Wi-Fi coverage are available throughout, with a Red Care alarm system providing security for peace of mind.







LIVING AREA

The Sky Suite is the uppermost of the four dwellings and benefits from a private roof terrace and splendid views over Hyde Park. The design has been carefully thought out to enhance horizontal views throughout the living space.

Every detail has been carefully planned to provide privileged London living with a warm colour palette, plentiful natural light and a gracious flow throughout. Cool accent blues, luxurious materials and statement pieces, for example the intricately detailed pendant light by Flos provides opulent contemporary style.





KITCHEN

The high-quality Poliform kitchen space has been designed so you can not only prepare food, but relax and enjoy time with friends and family.

Natural light reflects off the glossy white cabinetry and polished quartz work surfaces, creating a contrast against the Italian timber oak floor and dark Miele appliances.

In the Sky Suite, the elegant breakfast bar is a focal point for entertainment as well as a viewing gallery for the rest of the living area. The specification throughout sets new standards of luxury including a Qooker boiling water tap, two zone wine fridge and stainless steel fittings.



BEDROOM

Soft mood lighting, a luxurious in-laid rug and stunning white panelled wardrobes are all designed to provide a peaceful, comfortable bedroom.

Warm colours and luxury contemporary furniture is low-lying to enhance the ceiling height and openness. A Holly Hunt pendant light hangs elegantly to illuminate the space and walnut veneer lines the walls, concealing ample built in wardrobes.



SKY SUITE



BATHROOMS

Bathrooms have become sanctuaries away from busy lives; places to relax. The Sky Suite boasts a generously sized ensuite with original fireplace, as well as a separate guest WC with marble book-matched wall and a carved marble statement stand-alone basin.

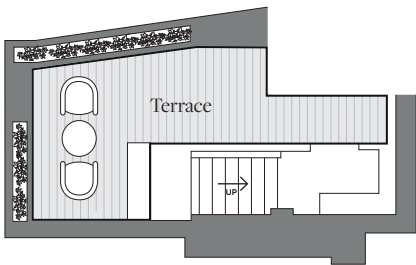
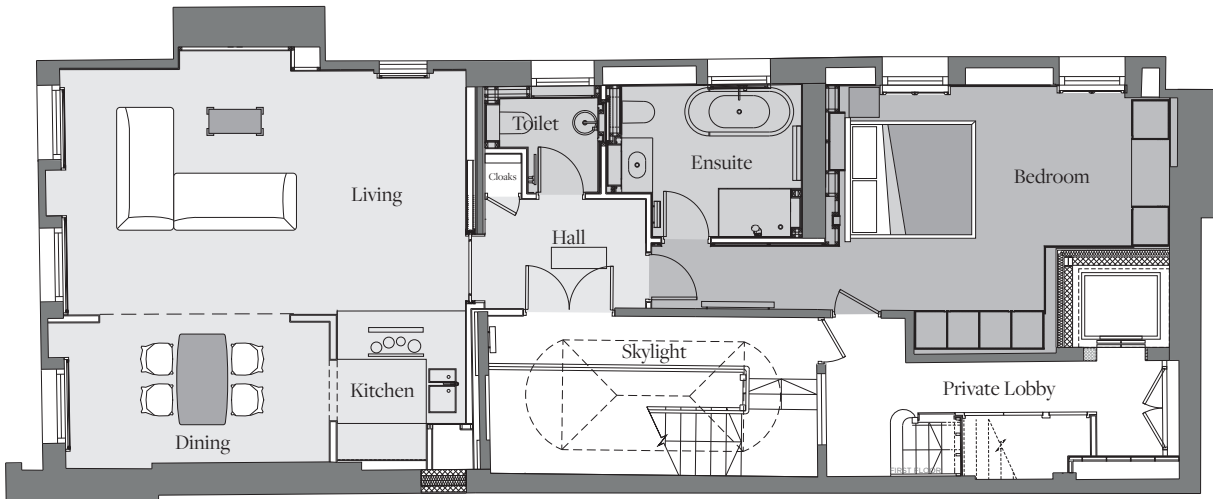
The bathrooms combine high-specification fixtures with the highest-quality materials. A large illuminated mirror reflects off the high quality marble surfaces and dark wood effect tiles provide a comparison of rich texture to help you unwind in the height of luxury.



SKY SUITE



FOURTH FLOOR



	square meters	square feet
Kitchen/Living/Dining	41m ²	441ft ²
Bedroom	19m ²	204ft ²
Ensuite	7m ²	75ft ²
Toilet	2m ²	21ft ²
Net Internal Area	89m ²	958ft ²
Exterior Terrace Area	9m ²	96ft ²

*All floorplans for 138 Park Lane are approximate measurements only. Exact layouts and sizes may vary.



138 PARK LANE

CONTACT

e: contact@138parklane.com
www.138parklane.com

